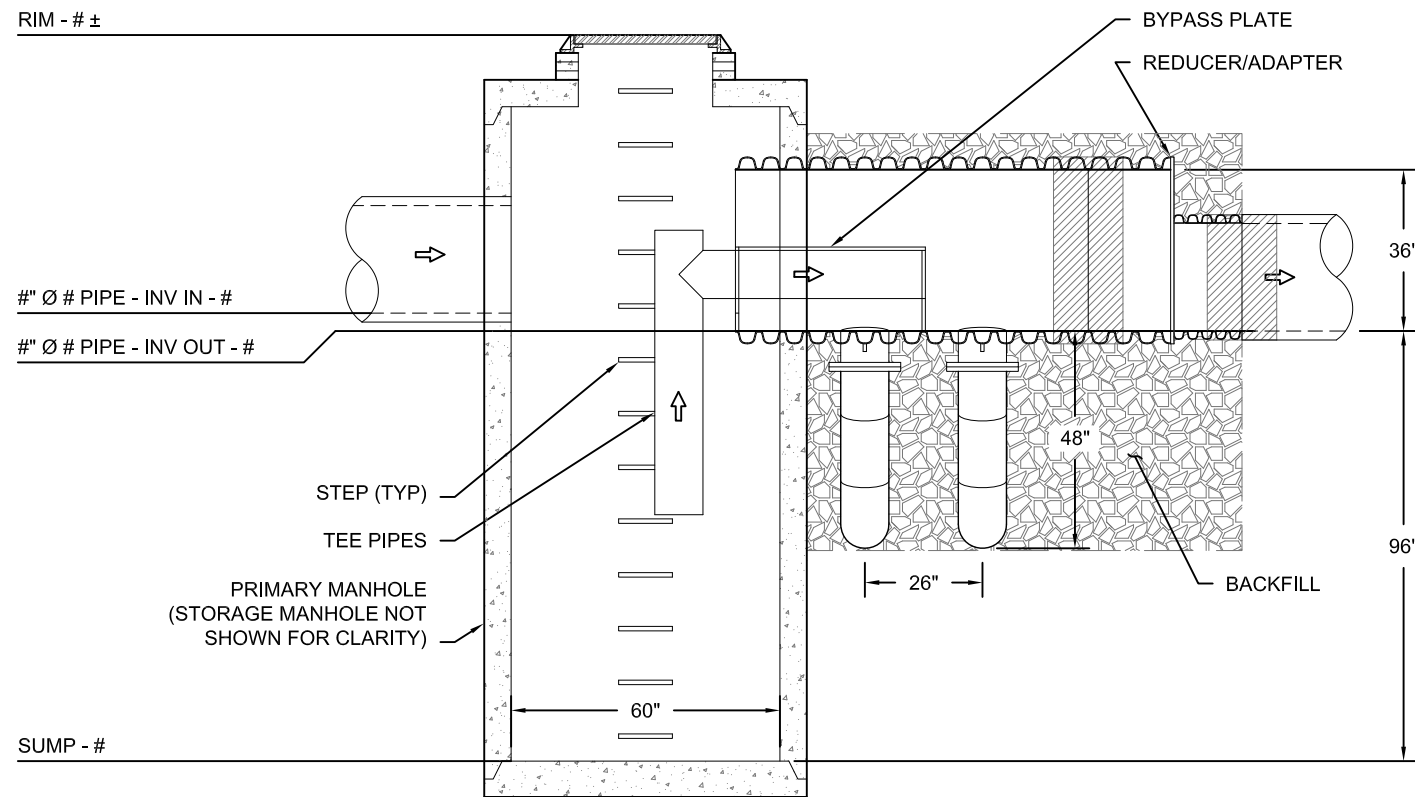


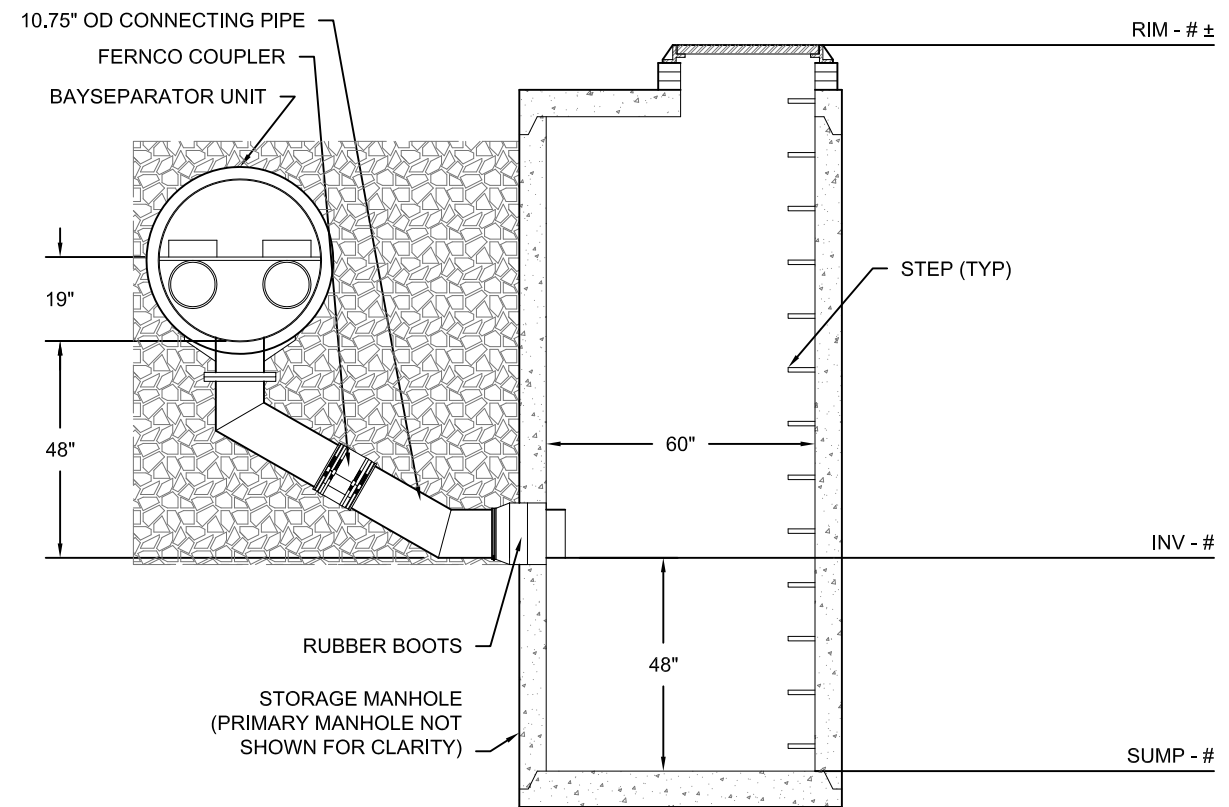
BAYSAVER BAYSEPARATOR 3K LEFT HAND UNIT
NTS

GENERAL NOTES:

1. MANHOLES SHOWN REPRESENT STANDARD PRECAST STRUCTURES PROVIDED BY OTHERS.
2. SEAL THE CONNECTING PIPES INTO THE STORAGE MANHOLE USING RUBBER BOOTS/GASKETS.
3. THE BAYSAVER SEPARATION SYSTEM INCLUDES THE SEPARATOR UNIT, (2) CONNECTING PIPES, (2) FERNCO COUPLERS, (1)
4. SEE BAYSAVER SPECIFICATIONS AND INSTALLATION INSTRUCTIONS FOR FURTHER DETAIL.
5. USE NON-SHRINK GROUT TO SEAL BAYSEPARATOR INTO THE PRIMARY MANHOLE.
6. BACKFILL: CLASS I, II OR III BACKFILL SHOULD BE USED TO AN ELEVATION OF AT LEAST 6" OVER THE CROWN OF THE SEPARATOR UNIT.
7. 12" COVER REQUIRED FOR TRAFFIC RATED SURFACE.
8. BAYSEPARATOR IS PROTECTED BY US PATENT NO. 5,746,911



PROFILE A-A
NTS



PROFILE B-B
NTS

REV	DWN	CKD	DESCRIPTION	PROJECT NAME		DATE	DRAWN	CHECKED
				CITY	STATE			
				#####	###		XXX	XXX
				#####	###		XXX	XXX

BAYSAVER TECHNOLOGIES
1030 Deer Hollow Drive
Mount Airy, MD 21771
1-800-BAYSAVER
1-800-229-7283

ADS
ADVANCED DRAINAGE SYSTEMS, INC.
4640 TRUEMAN BLVD
HILLIARD, OH 43026

THIS DRAWING HAS BEEN PREPARED BASED ON INFORMATION PROVIDED TO ADS UNDER THE DIRECTION OF THE SITE DESIGN ENGINEER OR OTHER PROJECT REPRESENTATIVE. THE SITE DESIGN ENGINEER SHALL REVIEW THIS DRAWING PRIOR TO CONSTRUCTION. IT IS THE ULTIMATE RESPONSIBILITY OF THE SITE DESIGN ENGINEER TO ENSURE THAT THE PRODUCT(S) DEPICTED AND ALL ASSOCIATED DETAILS MEET ALL APPLICABLE LAWS, REGULATIONS, AND PROJECT REQUIREMENTS.